

ARCADIA INC.

SERIES IPTC-470 ALUMINUM STOREFRONT (WZ3) (IMPACT)



2301 EAST VERNON AVE.
VERNON, CA 90058
PH: (323) 771-9819

INSTALLATION NOTES:

1. SEE SHEET 5 FOR ANCHOR TYPE REQUIREMENTS, MINIMUM EMBEDMENTS, AND MINIMUM EDGE DISTANCES. ALL ANCHOR REQUIREMENTS MUST BE ADHERED TO. ANY DEVIATIONS FROM ANCHOR REQUIREMENTS REQUIRES SEPARATE EVALUATION AND APPROVAL.
2. ONE (1) INSTALLATION ANCHOR IS REQUIRED AT EACH ANCHOR LOCATION SHOWN.
3. THE NUMBER OF INSTALLATION ANCHORS DEPICTED IS THE MINIMUM NUMBER OF ANCHORS TO BE USED FOR PRODUCT INSTALLATION.
4. INSTALL INDIVIDUAL INSTALLATION ANCHORS WITHIN A TOLERANCE OF ±1/2 INCH OF THE DEPICTED LOCATION IN THE ANCHOR LAYOUT DETAIL (I.E., WITHOUT CONSIDERATION OF TOLERANCES). TOLERANCES ARE NOT CUMULATIVE FROM ONE INSTALLATION ANCHOR TO THE NEXT.
5. SHIM AS REQUIRED AT EACH INSTALLATION ANCHOR WITH LOAD BEARING SHIM(S). MAXIMUM ALLOWABLE SHIM STACK TO BE 1/2 INCH. SHIM WHERE SPACE OF 1/16 INCH OR GREATER OCCURS. SHIM(S) SHALL BE CONSTRUCTED OF HIGH DENSITY PLASTIC OR BETTER. SEE SHEET 5 FOR ANCHOR INFORMATION.
6. MINIMUM EMBEDMENT AND EDGE DISTANCE EXCLUDE WALL FINISHES, INCLUDING BUT NOT LIMITED TO STUCCO, FOAM, BRICK VENEER, AND SIDING.
7. INSTALLATION ANCHORS AND ASSOCIATED HARDWARE MUST BE MADE OF CORROSION RESISTANT MATERIAL OR HAVE A CORROSION RESISTANT COATING.
8. FOR HOLLOW BLOCK AND GROUT FILLED BLOCK, DO NOT INSTALL INSTALLATION ANCHORS INTO MORTAR JOINTS. EDGE DISTANCE IS MEASURED FROM FREE EDGE OF BLOCK OR EDGE OF MORTAR JOINT INTO FACE SHELL OF BLOCK.
9. INSTALLATION ANCHORS SHALL BE INSTALLED IN ACCORDANCE WITH ANCHOR MANUFACTURER'S INSTALLATION INSTRUCTIONS, AND ANCHORS SHALL NOT BE USED IN SUBSTRATES WITH STRENGTHS LESS THAN THE MINIMUM STRENGTH SPECIFIED BY THE ANCHOR MANUFACTURER.
10. INSTALLATION ANCHOR CAPACITIES FOR PRODUCTS HEREIN ARE BASED ON SUBSTRATE MATERIALS WITH THE FOLLOWING PROPERTIES:
 - A. WOOD - MINIMUM SPECIFIC GRAVITY OF 0.55.
 - B. CONCRETE - MINIMUM COMPRESSIVE STRENGTH OF 3000 PSI.
 - C. MASONRY - CMU UNIT STRENGTH CONFORMS TO ASTM C-90, WITH MIN. COMPRESSIVE STRENGTH OF 2000 PSI AND GROUT CONFORMS TO ASTM C 476, MIN. GROUT COMPRESSIVE STRENGTH OF 2000 PSI.
 - D. STEEL - MINIMUM YIELD STRENGTH OF 36 KSI. MINIMUM 18 GA. WALL THICKNESS.
 - E. ALUMINUM - MINIMUM 1/8 INCH THICK 6063-T5 ALUMINUM.

GENERAL NOTES:

1. THE PRODUCT SHOWN HEREIN IS DESIGNED AND MANUFACTURED TO COMPLY WITH THE CURRENT FLORIDA BUILDING CODE (FBC), **EXCLUDING** HVHZ AND HAS BEEN EVALUATED ACCORDING TO THE FOLLOWING:
 - ASTM E1886-13
 - ASTM E1996-14
 - ASTM E283-04(2012)
 - ASTM E330-14
 - ASTM 331-00(2009)
 - AAMA 501-15
2. ADEQUACY OF THE EXISTING STRUCTURAL CONCRETE/MASONRY, 2X FRAMING AND METAL STUD FRAMING AS A MAIN WIND FORCE RESISTING SYSTEM CAPABLE OF WITHSTANDING AND TRANSFERRING APPLIED PRODUCT LOADS TO THE FOUNDATION IS THE RESPONSIBILITY OF THE ENGINEER OR ARCHITECT OF RECORD FOR THE PROJECT OF INSTALLATION.
3. 1X AND 2X BUCKS (WHEN USED) SHALL BE DESIGNED AND ANCHORED TO PROPERLY TRANSFER ALL LOADS TO THE STRUCTURE. BUCK DESIGN AND INSTALLATION IS THE RESPONSIBILITY OF THE ENGINEER OR ARCHITECT OF RECORD FOR THE PROJECT OF INSTALLATION.
4. THE INSTALLATION DETAILS DESCRIBED HEREIN ARE GENERIC AND MAY NOT REFLECT ACTUAL CONDITIONS FOR A SPECIFIC SITE. IF SITE CONDITIONS CAUSE INSTALLATION TO DEVIATE FROM THE REQUIREMENTS DETAILED HEREIN, A LICENSED ENGINEER OR ARCHITECT SHALL PREPARE SITE SPECIFIC DOCUMENTS FOR USE WITH THIS DOCUMENT.
5. APPROVED IMPACT PROTECTIVE SYSTEM **IS NOT REQUIRED** ON THIS PRODUCT IN AREAS REQUIRING IMPACT RESISTANCE IN WIND ZONE 3 OR LESS.
6. APPROVED IMPACT PROTECTIVE SYSTEM **IS REQUIRED** ON THIS PRODUCT IN AREAS REQUIRING IMPACT RESISTANCE IN WIND ZONE 4.
7. STOREFRONT FRAME MATERIAL: ALUMINUM 6063-T6
8. ALL STRUCTURAL MATERIALS & DISSIMILAR METALS SHALL BE PROTECTED, TREATED, PAINTED, COATED, AND/OR ISOLATED AS REQUIRED IN THE APPLICABLE SECTIONS OF THE CURRENT FLORIDA BUILDING CODE AND REFERENCED DESIGN SPECIFICATIONS.
9. GLASS MEETS THE REQUIREMENTS OF ASTM E 1300 GLASS CHARTS. SEE SHEET 3 FOR GLAZING DETAILS.

TABLE OF CONTENTS	
SHEET	SHEET DESCRIPTION
1	INSTALLATION & GENERAL NOTES
2	ELEVATION & ANCHOR LAYOUT
3	GLAZING DETAILS AND GLASS CAPACITY TABLE
4	MULLION CAPACITY TABLES
5	HORIZONTAL MULLION CAPACITY TABLE
6	ANCHOR TYPES A, B & C CAPACITY TABLES
7	VERTICAL SECTIONS
8	HORIZONTAL SECTIONS
9	BILL OF MATERIALS AND COMPONENTS
10	COMPONENTS

INSTRUCTIONS FOR USE:

1. DETERMINE DESIGN WIND LOAD REQUIREMENTS BASED ON WIND VELOCITY, BUILDING HEIGHT, RISK CATEGORY, & WIND ZONE USING APPLICABLE ASCE 7 STANDARD.
2. SEE CHARTS ON SHEET 3 FOR DESIGN LOAD CAPACITY OF DESIRED GLASS SIZE.
3. CHECK MULLION CAPACITY FOR A GIVEN SPACING AND HEIGHT USING CHARTS ON SHEET 4 AND 5.
4. USING CHART ON SHEET 6 SELECT ANCHOR OPTION WITH DESIGN RATING MORE THAN DESIGN LOAD SPECIFIED IN STEP 1 ABOVE.
5. THE LOWEST VALUE RESULTING FROM STEP 2, 3 AND 4 SHALL APPLY TO ENTIRE SYSTEM.

TITLE: SERIES IPTC-470 ALUMINUM STOREFRONT (WZ3) (IMPACT)

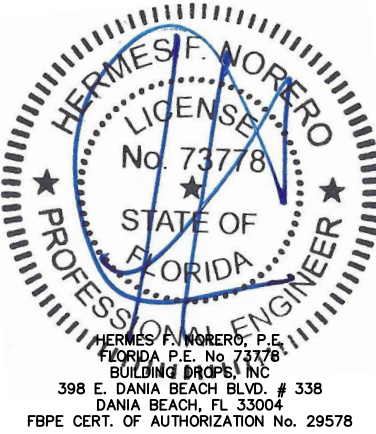
INSTALLATION & GENERAL NOTES

PREPARED BY: BUILDING DROPS, INC.
398 E. DANIA BEACH BLVD., STE. 338
DANIA BEACH, FL 33004
PH: (954) 399-8478
FAX: (954) 744-4738
WEB: www.buildingdrops.com



REMARKS	BY	DATE

THE INSTALLATION DETAILS DESCRIBED HEREIN ARE GENERIC AND MAY NOT REFLECT ACTUAL CONDITIONS FOR A SPECIFIC SITE. IF SITE CONDITIONS CAUSE INSTALLATION TO DEVIATE FROM THE REQUIREMENTS DETAILED HEREIN, A LICENSED ENGINEER OR ARCHITECT SHALL PREPARE SITE SPECIFIC DOCUMENTS FOR USE WITH THIS DOCUMENT.



FL #: **FL40951**

DATE: **01.28.22**

DWG. BY: RP/SH	CHK. BY: HN
-----------------------	--------------------

SCALE: **NTS**

DWG. #: **ARC001**

SHEET: **1** OF 10

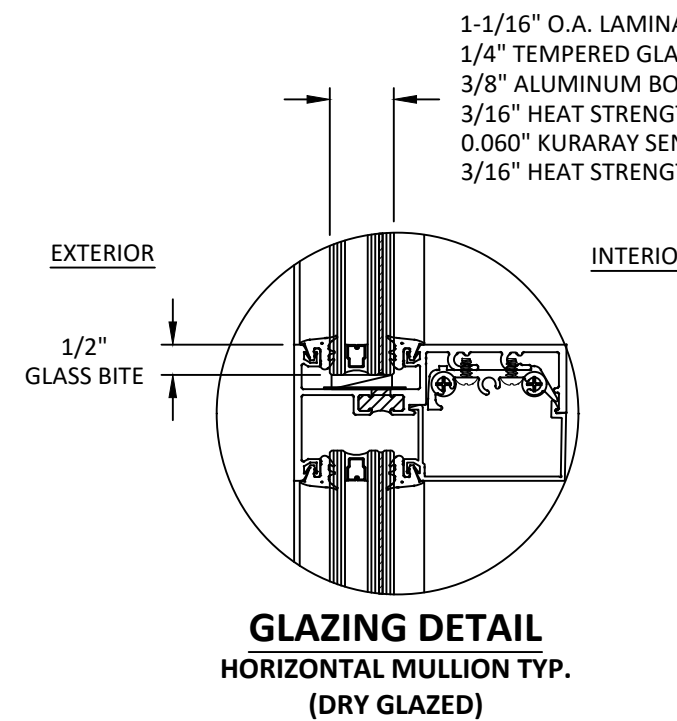
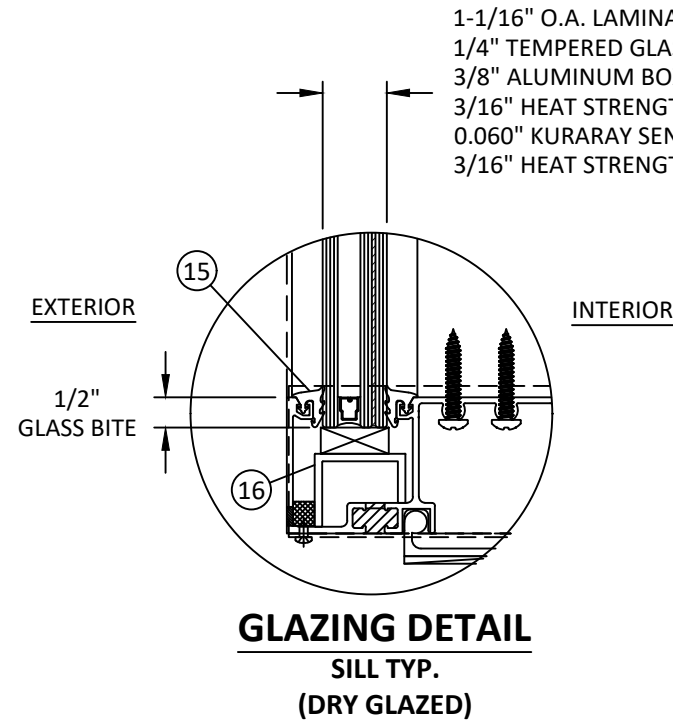
GLAZING DETAILS AND GLASS CAPACITY TABLE

LARGE OR SMALL MISSILE IMPACT

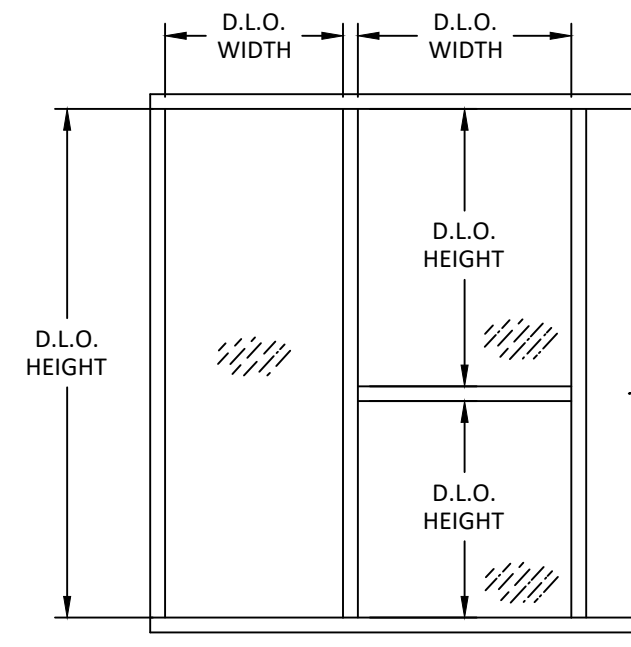


2301 EAST VERNON AVE.
VERNON, CA 90058
PH: (323) 771-9819

GLASS LOAD CAPACITY (PSF)			GLASS LOAD CAPACITY (PSF)				
DAYLIGHT OPENING (IN)		GLASS TYPE	DAYLIGHT OPENING (IN)		GLASS TYPE		
DLO WIDTH	DLO HEIGHT	EXT. (+) INT. (-)	DLO WIDTH	DLO HEIGHT	EXT. (+) INT. (-)		
27.625	43	60.0	27.625	79	60.0		
33.625		60.0	33.625		60.0		
39.625		60.0	39.625		60.0		
45.625		60.0	45.625		60.0		
51.625		60.0	51.625		60.0		
57.625		60.0	57.625		60.0		
63.625		56.1	63.625		54.3		
69.625		49.1	65.625		52.7		
75.625		43.7	27.625		60.0		
27.625		49	60.0		33.625	85	60.0
33.625	60.0		39.625	60.0			
39.625	60.0		45.625	60.0			
45.625	60.0		51.625	60.0			
51.625	60.0		57.625	60.0			
57.625	60.0		61.625	56.1			
63.625	60.0		27.625	60.0			
69.625	52.4		33.625	60.0			
75.625	46.2		39.625	60.0			
27.625	55		60.0	45.625	91		60.0
33.625		60.0	51.625	60.0			
39.625		60.0	57.625	60.0			
45.625		60.0	27.625	60.0			
51.625		60.0	33.625	60.0			
57.625		60.0	39.625	60.0			
63.625		60.0	45.625	60.0			
69.625		56.1	51.625	60.0			
75.625		49.1	53.625	60.0			
33.625		61	60.0	27.625		97	60.0
39.625	60.0		33.625	60.0			
45.625	60.0		39.625	60.0			
51.625	60.0		45.625	60.0			
57.625	60.0		50.625	60.0			
63.625	59.1		27.625	60.0			
69.625	60.0		33.625	60.0			
75.625	52.4		39.625	60.0			
27.625	67		60.0	45.625	103		60.0
33.625			60.0	51.625			60.0
39.625		60.0	57.625	60.0			
45.625		60.0	27.625	60.0			
51.625		60.0	33.625	60.0			
57.625		60.0	39.625	60.0			
63.625		54.3	47.625	60.0			
69.625		53.6	27.625	60.0			
75.625		56.1	33.625	60.0			
27.625		73	60.0	39.625		109	60.0
33.625	60.0		45.625	60.0			
39.625	60.0		51.625	60.0			
45.625	60.0		57.625	60.0			
51.625	60.0		61.625	56.1			
57.625	60.0		27.625	60.0			
63.625	54.3		33.625	60.0			
69.625	49.7		39.625	60.0			
71.625	48.3		44.625	60.0			



- NOTE:
- GLASS CAPACITIES ON THIS SHEET ARE BASED ON ASTM E1300-04 (3 SEC. GUSTS) AND CHAPTER 17 OF THE CURRENT FBC FOR SIZES OTHER THAN TESTED.
 - SETTING BLOCK DUROMETER HARDNESS OF 70-90 (SHORE A) AS REFERENCED IN CHAPTER 24.
 - SETTING BLOCKS TO BE LOCATED AT 1/4 SPAN LENGTH FOR GLASS WIDER THAN 36" AS PER CHAPTER 24.
 - D.L.O. MAY NOT EXCEED MAX DIMENSIONS IN GLASS CHARTS FOR GLASS TYPE.

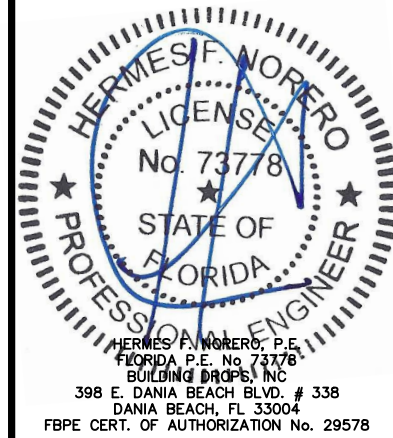


TITLE: SERIES IPTC-470 ALUMINUM STOREFRONT (WZ3) (IMPACT) GLAZING DETAIL AND GLASS CAPACITY TABLE

PREPARED BY: BUILDING DROPS, INC.
398 E. DANIA BEACH BLVD., STE. 338
DANIA BEACH, FL 33004
PH: (954) 399-8478
FAX: (954) 744-4738
WEB: www.buildingdrops.com

REMARKS	BY	DATE

THE INSTALLATION DETAILS DESCRIBED HEREIN ARE GENERIC AND MAY NOT REFLECT ACTUAL CONDITIONS FOR A SPECIFIC SITE. IF SITE CONDITIONS CAUSE INSTALLATION TO DEVIATE FROM THE REQUIREMENTS DETAILED HEREIN, A LICENSED ENGINEER OR ARCHITECT SHALL PREPARE SITE SPECIFIC DOCUMENTS FOR USE WITH THIS DOCUMENT.



FL #: **FL40951**

DATE: **01.28.22**

DWG. BY: RP/SH	CHK. BY: HN
-----------------------	--------------------

SCALE: **NTS**

DWG. #: **ARC001**

MULLION CAPACITY TABLES



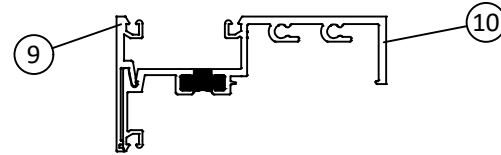
2301 EAST VERNON AVE.
VERNON, CA 90058
PH: (323) 771-9819

DESIGN LOAD CAPACITY - PSF					
NOMINAL DIMS.		JAMB - J1	MULLION - M1	MULLION - M2	MULLION - M3
WIDTH (W)	FRAME HEIGHT	EXT. (+) INT. (-)	EXT. (+) INT. (-)	EXT. (+) INT. (-)	EXT. (+) INT. (-)
30.875	47.5	60.0	60.0	60.0	60.0
36.875		60.0	60.0	60.0	60.0
42.875		60.0	60.0	60.0	60.0
46.875	53.5	60.0	60.0	60.0	60.0
30.875		60.0	60.0	60.0	60.0
36.875		60.0	60.0	60.0	60.0
42.875	59.5	60.0	60.0	60.0	60.0
48.875		60.0	60.0	60.0	60.0
54.875		60.0	60.0	60.0	60.0
58.875	65.5	60.0	60.0	60.0	60.0
30.875		60.0	60.0	60.0	60.0
36.875		60.0	60.0	60.0	60.0
42.875	71.5	60.0	60.0	60.0	60.0
48.875		60.0	60.0	60.0	60.0
54.875		60.0	60.0	60.0	60.0
60.875	77.5	60.0	60.0	60.0	60.0
66.875		60.0	60.0	60.0	60.0
72.875		58.5	60.0	60.0	60.0

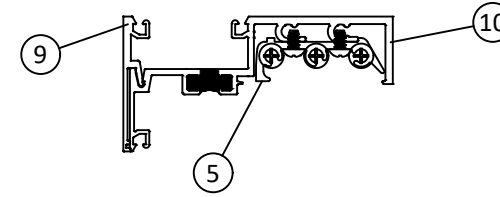
DESIGN LOAD CAPACITY - PSF					
NOMINAL DIMS.		JAMB - J1	MULLION - M1	MULLION - M2	MULLION - M3
WIDTH (W)	FRAME HEIGHT	EXT. (+) INT. (-)	EXT. (+) INT. (-)	EXT. (+) INT. (-)	EXT. (+) INT. (-)
30.875	83.5	60.0	60.0	60.0	60.0
36.875		60.0	60.0	60.0	60.0
42.875		60.0	60.0	60.0	60.0
48.875	89.5	60.0	60.0	60.0	60.0
54.875		60.0	60.0	60.0	60.0
60.875		60.0	60.0	60.0	60.0
66.875	95.5	59.1	60.0	60.0	60.0
30.875		60.0	60.0	60.0	60.0
36.875		60.0	60.0	60.0	60.0
42.875	101.5	60.0	60.0	60.0	60.0
48.875		60.0	60.0	60.0	60.0
54.875		60.0	60.0	60.0	60.0
59.875	107.5	57.7	60.0	45.6	60.0
30.875		60.0	60.0	60.0	60.0
36.875		60.0	60.0	60.0	60.0
42.875	113.5	60.0	60.0	60.0	60.0
48.875		60.0	60.0	60.0	60.0
53.875		53.5	55.7	42.2	59.3
30.875	119.5	60.0	60.0	60.0	60.0
36.875		60.0	60.0	60.0	60.0
42.875		60.0	60.0	60.0	60.0
48.875	125.5	60.0	60.0	60.0	60.0
54.875		60.0	60.0	60.0	60.0
60.875		60.0	60.0	60.0	60.0
66.875	131.5	60.0	60.0	60.0	60.0
72.875		60.0	60.0	60.0	60.0
78.875		60.0	60.0	60.0	60.0
84.875	137.5	60.0	60.0	60.0	60.0
90.875		60.0	60.0	60.0	60.0
96.875		60.0	60.0	60.0	60.0
102.875	143.5	60.0	60.0	60.0	60.0
108.875		60.0	60.0	60.0	60.0
114.875		60.0	60.0	60.0	60.0
120.875	149.5	60.0	60.0	60.0	60.0
126.875		60.0	60.0	60.0	60.0
132.875		60.0	60.0	60.0	60.0
138.875	155.5	60.0	60.0	60.0	60.0
144.875		60.0	60.0	60.0	60.0
150.875		60.0	60.0	60.0	60.0
156.875	161.5	60.0	60.0	60.0	60.0
162.875		60.0	60.0	60.0	60.0
168.875		60.0	60.0	60.0	60.0
174.875	167.5	60.0	60.0	60.0	60.0
180.875		60.0	60.0	60.0	60.0
186.875		60.0	60.0	60.0	60.0
192.875	173.5	60.0	60.0	60.0	60.0
198.875		60.0	60.0	60.0	60.0
204.875		60.0	60.0	60.0	60.0
210.875	179.5	60.0	60.0	60.0	60.0
216.875		60.0	60.0	60.0	60.0
222.875		60.0	60.0	60.0	60.0
228.875	185.5	60.0	60.0	60.0	60.0
234.875		60.0	60.0	60.0	60.0
240.875		60.0	60.0	60.0	60.0
246.875	191.5	60.0	60.0	60.0	60.0
252.875		60.0	60.0	60.0	60.0
258.875		60.0	60.0	60.0	60.0
264.875	197.5	60.0	60.0	60.0	60.0
270.875		60.0	60.0	60.0	60.0
276.875		60.0	60.0	60.0	60.0
282.875	203.5	60.0	60.0	60.0	60.0
288.875		60.0	60.0	60.0	60.0
294.875		60.0	60.0	60.0	60.0
300.875	209.5	60.0	60.0	60.0	60.0
306.875		60.0	60.0	60.0	60.0
312.875		60.0	60.0	60.0	60.0
318.875	215.5	60.0	60.0	60.0	60.0
324.875		60.0	60.0	60.0	60.0
330.875		60.0	60.0	60.0	60.0
336.875	221.5	60.0	60.0	60.0	60.0
342.875		60.0	60.0	60.0	60.0
348.875		60.0	60.0	60.0	60.0
354.875	227.5	60.0	60.0	60.0	60.0
360.875		60.0	60.0	60.0	60.0
366.875		60.0	60.0	60.0	60.0
372.875	233.5	60.0	60.0	60.0	60.0
378.875		60.0	60.0	60.0	60.0
384.875		60.0	60.0	60.0	60.0
390.875	239.5	60.0	60.0	60.0	60.0
396.875		60.0	60.0	60.0	60.0
402.875		60.0	60.0	60.0	60.0
408.875	245.5	60.0	60.0	60.0	60.0
414.875		60.0	60.0	60.0	60.0
420.875		60.0	60.0	60.0	60.0
426.875	251.5	60.0	60.0	60.0	60.0
432.875		60.0	60.0	60.0	60.0
438.875		60.0	60.0	60.0	60.0
444.875	257.5	60.0	60.0	60.0	60.0
450.875		60.0	60.0	60.0	60.0
456.875		60.0	60.0	60.0	60.0
462.875	263.5	60.0	60.0	60.0	60.0
468.875		60.0	60.0	60.0	60.0
474.875		60.0	60.0	60.0	60.0
480.875	269.5	60.0	60.0	60.0	60.0
486.875		60.0	60.0	60.0	60.0
492.875		60.0	60.0	60.0	60.0
498.875	275.5	60.0	60.0	60.0	60.0
504.875		60.0	60.0	60.0	60.0
510.875		60.0	60.0	60.0	60.0
516.875	281.5	60.0	60.0	60.0	60.0
522.875		60.0	60.0	60.0	60.0
528.875		60.0	60.0	60.0	60.0
534.875	287.5	60.0	60.0	60.0	60.0
540.875		60.0	60.0	60.0	60.0
546.875		60.0	60.0	60.0	60.0
552.875	293.5	60.0	60.0	60.0	60.0
558.875		60.0	60.0	60.0	60.0
564.875		60.0	60.0	60.0	60.0
570.875	299.5	60.0	60.0	60.0	60.0
576.875		60.0	60.0	60.0	60.0
582.875		60.0	60.0	60.0	60.0
588.875	305.5	60.0	60.0	60.0	60.0
594.875		60.0	60.0	60.0	60.0
600.875		60.0	60.0	60.0	60.0
606.875	311.5	60.0	60.0	60.0	60.0
612.875		60.0	60.0	60.0	60.0
618.875		60.0	60.0	60.0	60.0
624.875	317.5	60.0	60.0	60.0	60.0
630.875		60.0	60.0	60.0	60.0
636.875		60.0	60.0	60.0	60.0
642.875	323.5	60.0	60.0	60.0	60.0
648.875		60.0	60.0	60.0	60.0
654.875		60.0	60.0	60.0	60.0
660.875	329.5	60.0	60.0	60.0	60.0
666.875		60.0	60.0	60.0	60.0
672.875		60.0	60.0	60.0	60.0
678.875	335.5	60.0	60.0	60.0	60.0
684.875		60.0	60.0	60.0	60.0
690.875		60.0	60.0	60.0	60.0
696.875	341.5	60.0	60.0	60.0	60.0
702.875		60.0	60.0	60.0	60.0
708.875		60.0	60.0	60.0	60.0
714.875	347.5	60.0	60.0	60.0	60.0
720.875		60.0	60.0	60.0	60.0
726.875		60.0	60.0	60.0	60.0
732.875	353.5	60.0	60.0	60.0	60.0
738.875		60.0	60.0	60.0	60.0
744.875		60.0	60.0	60.0	60.0
750.875	359.5	60.0	60.0	60.0	60.0
756.875		60.0	60.0	60.0	60.0
762.875		60.0	60.0	60.0	60.0
768.875	365.5	60.0	60.0	60.0	60.0
774.875		60.0	60.0	60.0	60.0
780.875		60.0	60.0	60.0	60.0
786.875	371.5	60.0	60.0	60.0	60.0
792.875		60.0	60.0	60.0	60.0
798.875		60.0	60.0	60.0	60.0
804.875	377.5	60.0	60.0	60.0	60.0
810.875		60.0	60.0	60.0	60.0
816.875		60.0	60.0	60.0	60.0
822.875	383.5	60.0	60.0	60.0	60.0
828.875		60.0	60.0	60.0	60.0
834.875		60.0	60.0	60.0	60.0
840.875	389.5	60.0	60.0	60.0	60.0
846.875		60.0	60.0	60.0	60.0
852.875		60.0	60.0	60.0	60.0
858.875	395.5	60.0	60.0	60.0	60.0
864.875		60.0	60.0	60.0	60.0
870.875		60.0	60.0	60.0	60.0
876.875	401.5	60.0	60.0	60.0	60.0
882.875		60.0	60.0	60.0	60.0
888.875		60.0	60.0	60.0	60.0
894.875	407.5	60.0	60.0	60.0	60.0
900.875		60.0	60.0	60.0	60.0
906.875		60.0	60.0	60.0	60.0
912.875	413.5	60.0	60.0	60.0	60.0
918.875		60.0	60.0	60.0	60.0
924.875		60.0	60.0	60.0	60.0
930.875	419.5	60.0	60.0	60.0	60.0
936.875		60.0	60.0	60.0	60.0
942.875		60.0	60.0	60.0	60.0
948.875	425.5	60.0	60.0	60.0	60.0
954.875		60.0	60.0	60.0	60.0
960.875		60.0	60.0	60.0	60.0
966.875	431.5	60.0	60.0	60.0	60.0
972.875		60.0	60.0	60.0	60.0
978.875		60.0	60.0	60.0	60.0
984.875	437.5	60.0	60.0	60.0	60.0
990.875		60.0	60.0	60.0	60.0
996.875		60.0	60.0	60.0	60.0
1002.875	443.5	60.0	60.0	60.0	60.0
1008.875		60.0	60.0	60.0	60.0
1014.875		60.0	60.0	60.0	60.0
1020.875	449.5	60.0	60.0	60.0	60.0
1026.875		60.0	60.0	60.0	60.0
1032.875		60.0	60.0	60.0	60.0
1038.875	455.5	60.0	60.0	60.0	60.0
1044.875		60.0	60.0	60.0	60.0
1050.875					

HORIZONTAL MULLION CAPACITY TABLE

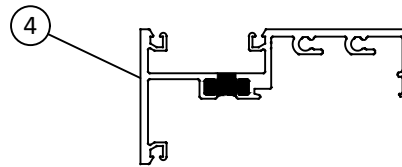
LIMIT DESIGN LOADS FOR HORIZONTAL AS FOLLOWS			
MAX HORIZ. SPAN (in.)	MAX GLASS HEIGHT ABOVE HORIZ. (in.)	MAX DESIGN LOADS (PSF)	
		Horizontal - H1	Horizontal - H2
29.875	23.75	60	60
35.875	29.75	60	60
41.875	35.75	60	60
47.875	41.75	60	60
53.875	47.75	60	60
59.875	47.75	60	60
65.875	41.75	60	60
71.875	35.75	60	60



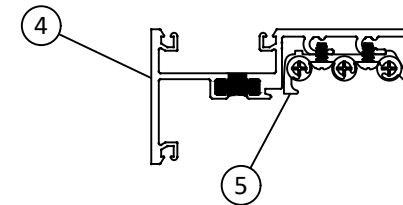
HORIZONTAL - 'H1'
(SCREW SPLINE)



HORIZONTAL - 'H1'
(CLIP)



HORIZONTAL - 'H2'
(SCREW SPLINE)



HORIZONTAL - 'H2'
(CLIP)

NOTE:
VALUES SHOWN ARE APPLICABLE TO
SCREW SPLINE AND CLIP HORIZONTAL.



2301 EAST VERNON AVE.
VERNON, CA 90058
PH: (323) 771-9819

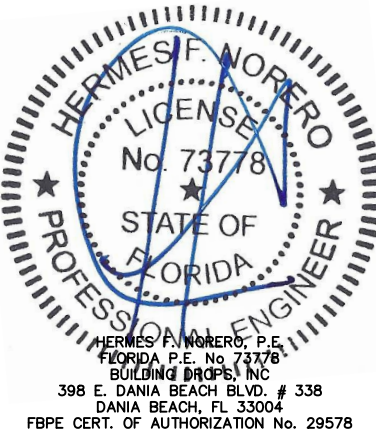
TITLE: SERIES IPTC-470
ALUMINUM STOREFRONT
(WZ3) (IMPACT)
HORIZONTAL MULLION
CAPACITY TABLE

PREPARED BY:
BUILDING DROPS, INC.
398 E. DANIA BEACH BLVD., STE. 338
DANIA BEACH, FL 33004
PH: (954) 399-8478
FAX: (954) 744-4738
WEB: www.buildingdrops.com



REMARKS	BY	DATE

THE INSTALLATION DETAILS DESCRIBED HEREIN ARE GENERIC AND MAY NOT REFLECT ACTUAL CONDITIONS FOR A SPECIFIC SITE. IF SITE CONDITIONS CAUSE INSTALLATION TO DEVIATE FROM THE REQUIREMENTS DETAILED HEREIN, A LICENSED ENGINEER OR ARCHITECT SHALL PREPARE SITE SPECIFIC DOCUMENTS FOR USE WITH THIS DOCUMENT.



FL #: **FL40951**

DATE: **01.28.22**

DWG. BY: **RP/SH** CHK. BY: **HN**

SCALE: **NTS**

DWG. #: **ARC001**

SHEET:
5
OF 10

ANCHOR TYPES 'A, B, & C' CAPACITY TABLES

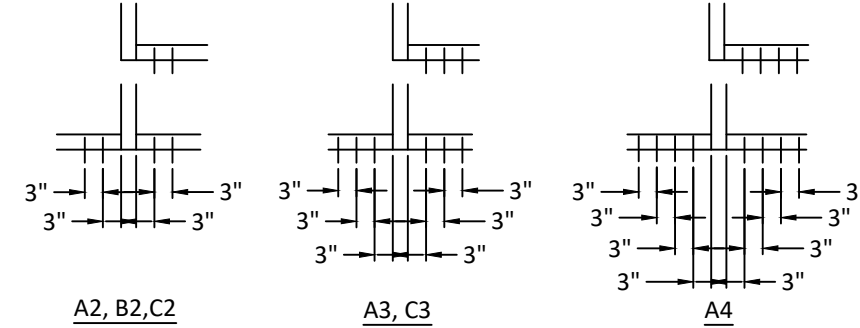


2301 EAST VERNON AVE.
VERNON, CA 90058
PH: (323) 771-9819

ANCHORS TYPES: SEE TABLE BELOW FOR DESCRIPTION

- A2 = (2) ANCHORS TYPE 'A' AT JAMB OR EACH SIDE OF MULLION
- A3 = (3) ANCHORS TYPE 'A' AT JAMB OR EACH SIDE OF MULLION
- A4 = (4) ANCHORS TYPE 'A' AT JAMB OR EACH SIDE OF MULLION
- B2 = (2) ANCHORS TYPE 'B' AT JAMB OR EACH SIDE OF MULLION
- C2 = (2) ANCHORS TYPE 'C' AT JAMB OR EACH SIDE OF MULLION
- C3 = (3) ANCHORS TYPE 'C' AT JAMB OR EACH SIDE OF MULLION

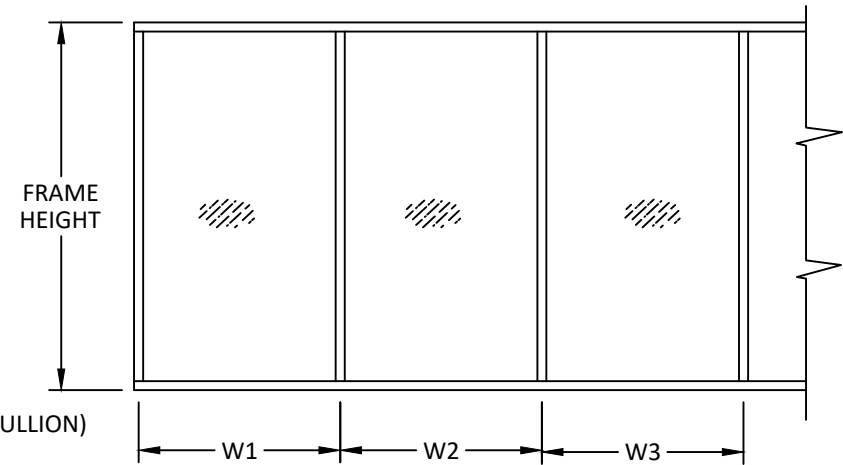
ALL OTHER ANCHORS TO BE SPACED AS PER ELEVATION



A2, B2, C2

A3, C3

A4



WIDTH (W) = W1 (JAMB)

WIDTH (W) = $\frac{W2 + W3}{2}$ (MULLION)

ANCHOR LOAD CAPACITY - PSF EXT. (+) & INT. (-)							
NOMINAL DIMS.		ANCHORS TYPE 'A'		ANCHORS TYPE 'B'	ANCHORS TYPE 'C'		
WIDTH (W)	FRAME HEIGHT	A2	A3	A4	B2	C2	C3
30.9	47.5	60.0	60.0	60.0	60.0	60.0	60.0
36.9		60.0	60.0	60.0	60.0	60.0	60.0
42.9		60.0	60.0	60.0	60.0	60.0	60.0
46.9		60.0	60.0	60.0	60.0	60.0	60.0
30.9	53.5	60.0	60.0	60.0	60.0	60.0	60.0
36.9		60.0	60.0	60.0	60.0	60.0	60.0
42.9		60.0	60.0	60.0	60.0	60.0	60.0
48.9		60.0	60.0	60.0	60.0	60.0	60.0
52.9		60.0	60.0	60.0	60.0	60.0	60.0
30.9	59.5	60.0	60.0	60.0	60.0	60.0	60.0
36.9		60.0	60.0	60.0	60.0	60.0	60.0
42.9		60.0	60.0	60.0	60.0	60.0	60.0
48.9		60.0	60.0	60.0	60.0	60.0	60.0
54.9		60.0	60.0	60.0	60.0	60.0	60.0
58.9		55.9	60.0	60.0	60.0	60.0	60.0
30.9	65.5	60.0	60.0	60.0	60.0	60.0	60.0
36.9		60.0	60.0	60.0	60.0	60.0	60.0
42.9		60.0	60.0	60.0	60.0	60.0	60.0
48.9		60.0	60.0	60.0	60.0	60.0	60.0
54.9		54.5	60.0	60.0	60.0	60.0	60.0
60.9		49.1	60.0	60.0	60.0	60.0	60.0
64.9		46.1	60.0	60.0	60.0	60.0	60.0
30.9	71.5	60.0	60.0	60.0	60.0	60.0	60.0
36.9		60.0	60.0	60.0	60.0	60.0	60.0
42.9		60.0	60.0	60.0	60.0	60.0	60.0
48.9		56.0	60.0	60.0	60.0	60.0	60.0
54.9		49.9	60.0	60.0	60.0	60.0	60.0
60.9		45.0	60.0	60.0	60.0	60.0	60.0
66.9		41.0	60.0	60.0	60.0	60.0	60.0
70.9		38.6	58.0	60.0	60.0	58.7	60.0
30.9	77.5	60.0	60.0	60.0	60.0	60.0	60.0
36.9		60.0	60.0	60.0	60.0	60.0	60.0
42.9		58.9	60.0	60.0	60.0	60.0	60.0
48.9		51.7	60.0	60.0	60.0	60.0	60.0
54.9		46.0	60.0	60.0	60.0	60.0	60.0
60.9		41.5	60.0	60.0	60.0	60.0	60.0
66.9		37.8	56.7	60.0	60.0	57.4	60.0
72.9		34.7	52.0	60.0	60.0	52.7	60.0

ANCHOR LOAD CAPACITY - PSF EXT. (+) & INT. (-)								
NOMINAL DIMS.		ANCHORS TYPE 'A'		ANCHORS TYPE 'B'	ANCHORS TYPE 'C'			
WIDTH (W)	FRAME HEIGHT	A2	A3	A4	B2	C2	C3	
30.9	83.5	60.0	60.0	60.0	60.0	60.0	60.0	
36.9		60.0	60.0	60.0	60.0	60.0	60.0	
42.9		54.7	60.0	60.0	60.0	60.0	60.0	
48.9		48.0	60.0	60.0	60.0	60.0	60.0	
54.9		42.7	60.0	60.0	60.0	60.0	60.0	
60.9		38.5	57.8	60.0	60.0	58.5	60.0	
66.9		35.1	52.6	60.0	60.0	53.3	60.0	
30.9	89.5	60.0	60.0	60.0	60.0	60.0	60.0	
36.9		59.3	60.0	60.0	60.0	60.0	60.0	
42.9		51.0	60.0	60.0	60.0	60.0	60.0	
48.9		44.8	60.0	60.0	60.0	60.0	60.0	
54.9		39.9	59.8	60.0	60.0	60.0	60.0	
60.9		35.9	53.9	60.0	60.0	54.6	60.0	
30.9	95.5	60.0	60.0	60.0	60.0	60.0	60.0	
36.9		55.6	60.0	60.0	60.0	60.0	60.0	
42.9		47.8	60.0	60.0	60.0	60.0	60.0	
48.9		42.0	60.0	60.0	60.0	60.0	60.0	
54.9		37.4	56.1	60.0	60.0	56.8	60.0	
59.9		34.2	51.4	60.0	60.0	52.0	60.0	
30.9	101.5	60.0	60.0	60.0	60.0	60.0	60.0	
36.9		52.3	60.0	60.0	60.0	60.0	60.0	
42.9		45.0	60.0	60.0	60.0	60.0	60.0	
48.9		39.5	59.2	60.0	60.0	60.0	60.0	
53.9		35.8	53.7	60.0	60.0	54.4	60.0	
30.9	107.5	59.0	60.0	60.0	60.0	60.0	60.0	
36.9		49.4	60.0	60.0	60.0	60.0	60.0	
42.9		42.5	60.0	60.0	60.0	60.0	60.0	
48.9		37.3	55.9	60.0	60.0	60.0	56.6	60.0
50.9		35.8	53.7	60.0	60.0	54.4	60.0	
30.9	113.5	55.9	60.0	60.0	60.0	60.0	60.0	
36.9		46.8	60.0	60.0	60.0	60.0	60.0	
42.9		40.2	60.0	60.0	60.0	60.0	60.0	
47.9		36.0	54.1	60.0	60.0	60.0	54.8	60.0
30.9	119.5	53.1	60.0	60.0	60.0	60.0	60.0	
36.9		44.4	60.0	60.0	60.0	60.0	60.0	
42.9		38.2	57.3	60.0	60.0	60.0	58.1	60.0
45.9			35.7	53.6	60.0	60.0	54.3	60.0

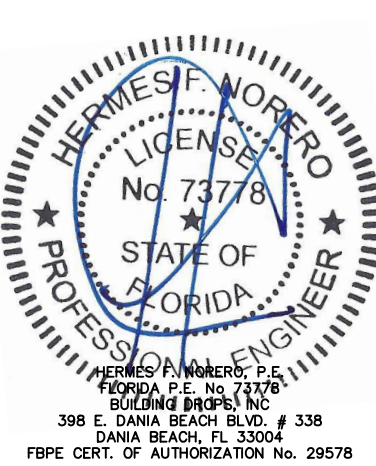
TC-470 ALUMINUM STOREFRONT ANCHOR TYPES					
ANCHOR TYPE	ANCHOR DESCRIPTION	SUBSTRATE REQUIREMENTS	MIN. EMBEDMENT	MIN. EDGE DISTANCE	NOTES
A	1/4" DIA. TAPCON BY ITW (Fu=125 KSI, Fy=100 KSI)	CONCRETE F'C = 3000 PSI MIN. C-90 HOLLOW/FILLED BLOCK F'M = 2000 PSI MIN.	1-3/4"	3"	MAY BE USED THROUGH OPTIONAL 1X BUCKS, BY OTHERS
B	#14 WOOD SCREW	MIN. S.G. = 0.55 WOOD	1-1/2"	1"	--
C	1/4" DIA. SELF-DRILLING SCREWS (GRADE 5)	STEEL: 18 GA. MIN., Fy=36 KSI MIN. ALUM.: 1/8" MIN., 6063-T5 MIN.	3 THREADS PENETRATION PAST METAL STRUCTURE	3/4"	STEEL IN CONTACT WITH ALUM. TO BE PLATED OR PAINTED

TITLE: SERIES IPTC-470 ALUMINUM STOREFRONT (WZ3) (IMPACT) ANCHOR TYPES A, B & C CAPACITY TABLE

PREPARED BY: BUILDING DROPS, INC.
398 E. DANIA BEACH BLVD., STE. 338
DANIA BEACH, FL 33004
PH: (954) 399-8478
FAX: (954) 744-4738
WEB: www.buildingdrops.com

REMARKS	BY	DATE

THE INSTALLATION DETAILS DESCRIBED HEREIN ARE GENERIC AND MAY NOT REFLECT ACTUAL CONDITIONS FOR A SPECIFIC SITE. IF SITE CONDITIONS CAUSE INSTALLATION TO DEVIATE FROM THE REQUIREMENTS DETAILED HEREIN, A LICENSED ENGINEER OR ARCHITECT SHALL PREPARE SITE SPECIFIC DOCUMENTS FOR USE WITH THIS DOCUMENT.



FL #: **FL40951**

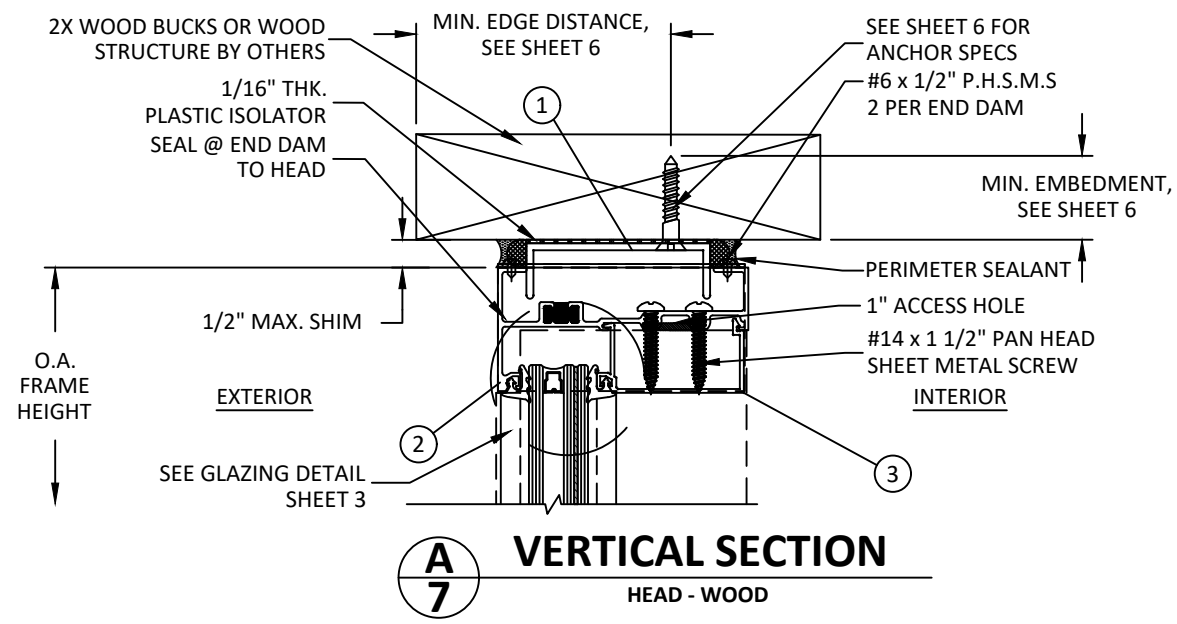
DATE: **01.28.22**

DWG. BY: **RP/SH** CHK. BY: **HN**

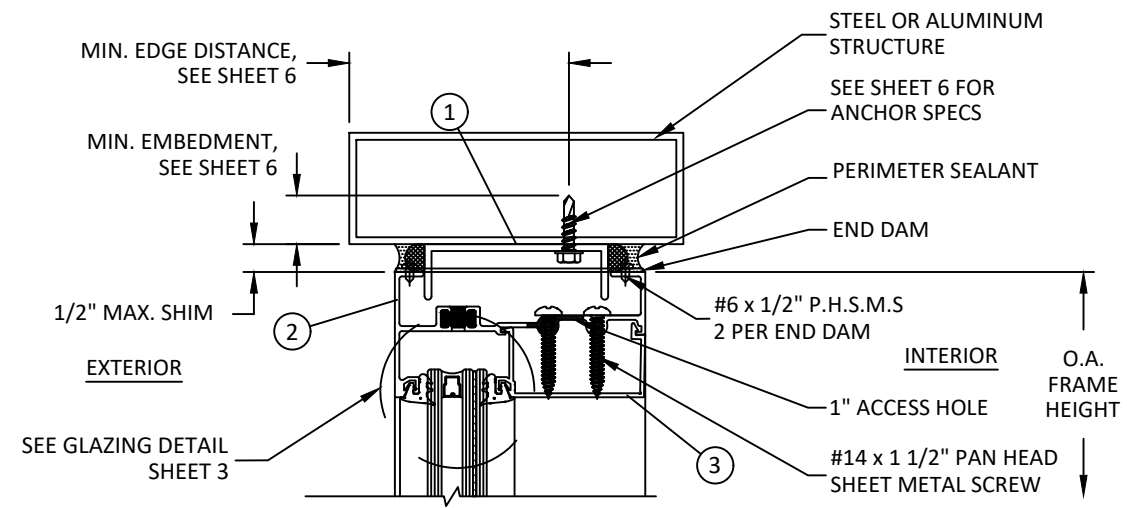
SCALE: **NTS**

DWG. #: **ARC001**

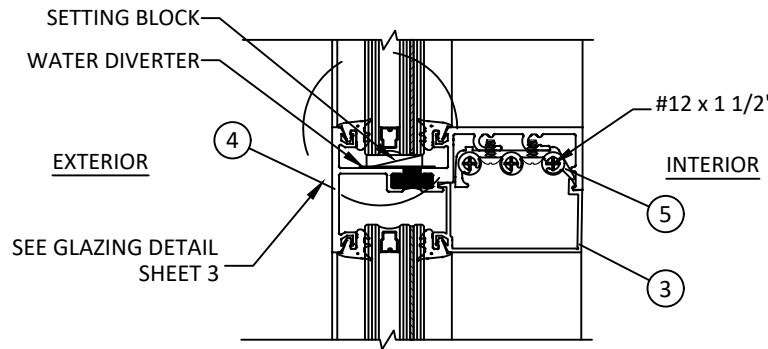
2/16/2022 9:55 AM
 s:\projects\arcadia, inc\lbc-22-0129.1 - lbc submittal - lbc70 aluminum storefront, opg1900 curtain wall system, 1200 casement window, vs512 entrance door, ms362 entrance door, dwp5\lbc70 - storefront\arc001.dwg



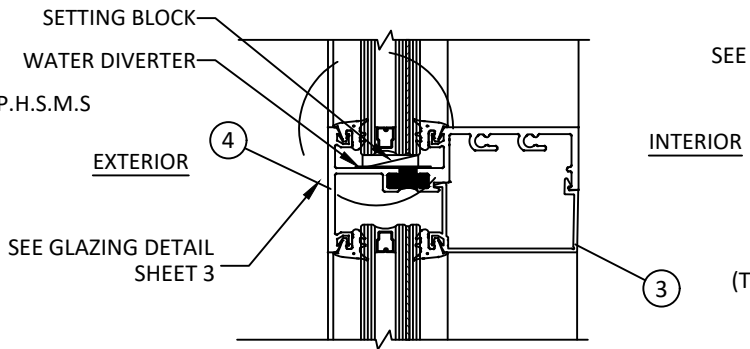
A
7
VERTICAL SECTION
HEAD - WOOD



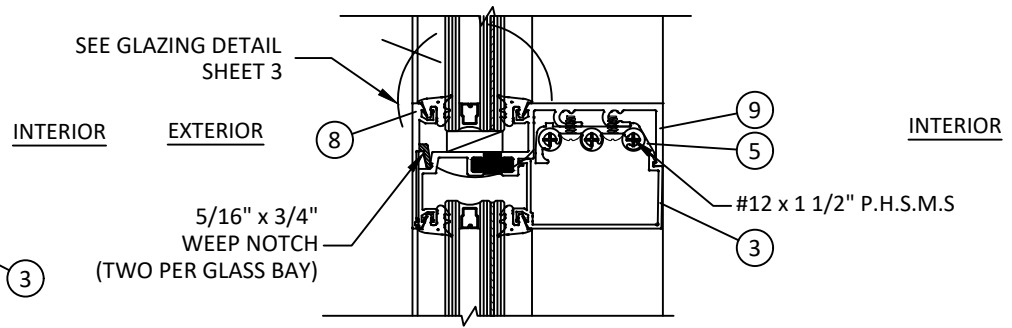
D
7
VERTICAL SECTION
HEAD - STEEL / ALUMINUM SUBSTRATE



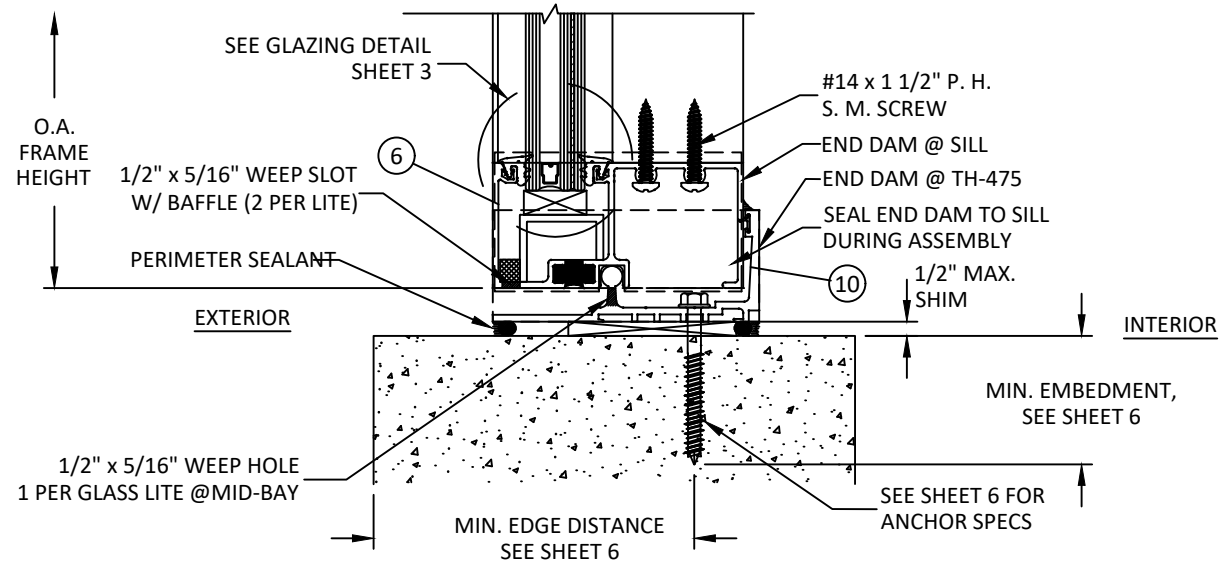
B
7
VERTICAL SECTION
HORIZONTAL



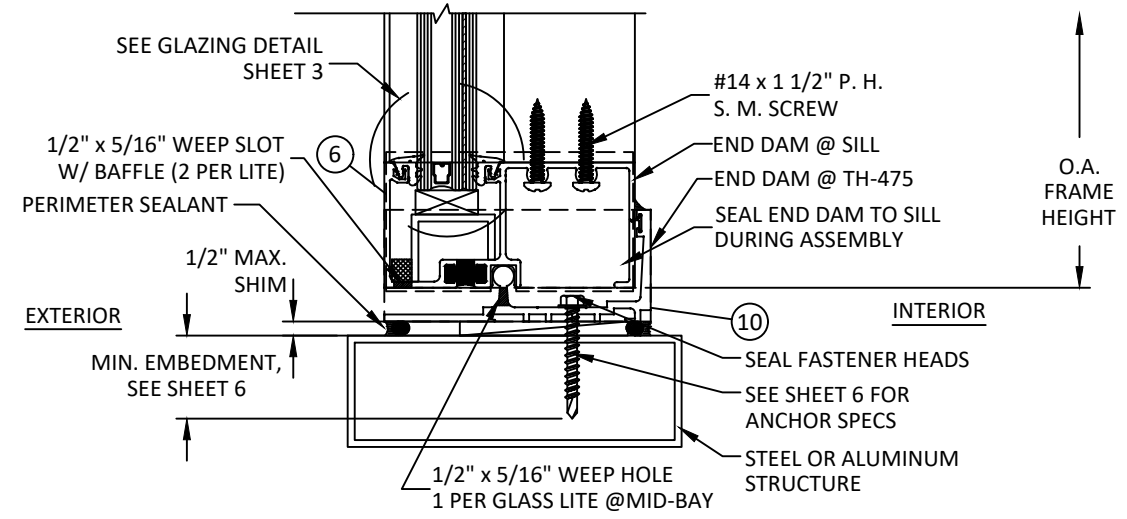
G
7
VERTICAL SECTION
HORIZONTAL



E
7
VERTICAL SECTION
HORIZONTAL



C
7
VERTICAL SECTION
SILL - CONCRETE/MASONRY



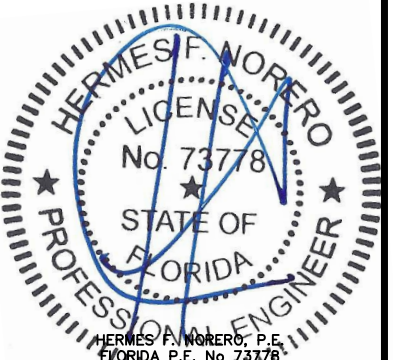
F
7
VERTICAL SECTION
SILL - STEEL / ALUMINUM SUBSTRATE


 2301 EAST VERNON AVE.
 VERNON, CA 90058
 PH: (323) 771-9819

TITLE: SERIES IPTC-470 ALUMINUM STOREFRONT (WZ3) (IMPACT) VERTICAL SECTIONS
 PREPARED BY: BUILDING DROPS, INC.
 398 E. DANIA BEACH BLVD., STE. 338
 DANIA BEACH, FL 33004
 PH: (954) 399-8478
 FAX: (954) 744-4738
 WEB: www.buildingdrops.com

REMARKS	BY	DATE

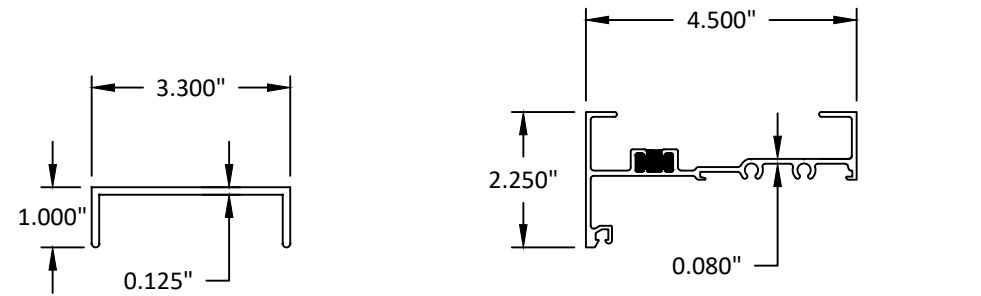
THE INSTALLATION DETAILS DESCRIBED HEREIN ARE GENERIC AND MAY NOT REFLECT ACTUAL CONDITIONS FOR A SPECIFIC SITE. IF SITE CONDITIONS CAUSE INSTALLATION TO DEVIATE FROM THE REQUIREMENTS DETAILED HEREIN, A LICENSED ENGINEER OR ARCHITECT SHALL PREPARE SITE SPECIFIC DOCUMENTS FOR USE WITH THIS DOCUMENT.


 HERMES F. MORERO, P.E.
 FLORIDA P.E. No. 73778
 BUILDING DROPS, INC.
 398 E. DANIA BEACH BLVD., # 338
 DANIA BEACH, FL 33004
 FBPE CERT. OF AUTHORIZATION No. 29578

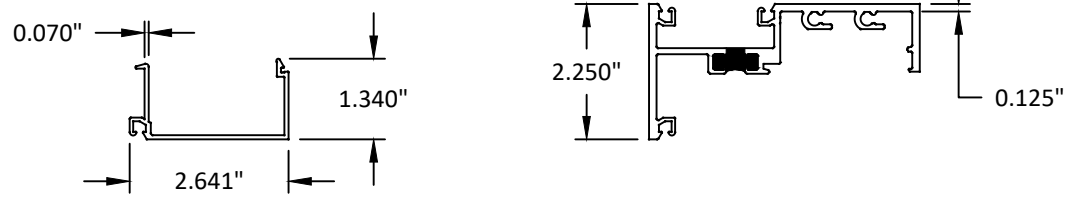
FL #: **FL40951**
 DATE: **01.28.22**
 DWG. BY: **RP/SH** CHK. BY: **HN**
 SCALE: **NTS**
 DWG. #: **ARC001**
 SHEET: **7** OF 10

2/16/2022 9:55 AM
s:\projects\arcadia, inc\lbc-22-0129.1 - lbc submittal - lbc470 aluminum storefront, ogg1900 curtain wall system, l200 casement window, vs512 entrance door, ms362 entrance door.dwg - storefront\arc001.dwg

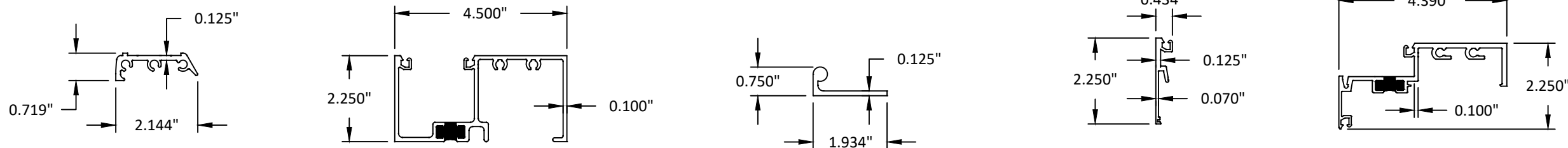
BILL OF MATERIALS				
ITEM	PART No.	DESCRIPTION	MATERIAL	MANUF./SUPPLIER/REMARKS
1	TH-411	U-SHAPED HEAD CLIP (CONTINUOUS)	6063-T6	ARCADIA INC.
2	TH-407	HEAD	6063-T6	ARCADIA INC.
3	TH-404	GLAZING STOP	6063-T6	ARCADIA INC.
4	TH-476	HORIZONTAL	6063-T6	ARCADIA INC.
5	402	CLIP	6063-T6	ARCADIA INC.
6	TH-481	SILL	6063-T6	ARCADIA INC.
7	TH-410	SILL CLIP (CONTINUOUS)	6063-T6	ARCADIA INC.
8	TH-472	GLAZING BEAD	6063-T6	ARCADIA INC.
9	TH-477	HORIZONTAL	6063-T6	ARCADIA INC.
10	TH-475	SILL SUPPORT	6063-T6	ARCADIA INC.
11	TH-437	MULLION MALE	6063-T6	ARCADIA INC.
12	TH-438	MULLION FEMALE	6063-T6	ARCADIA INC.
13	TH-406	MULLION	6063-T6	ARCADIA INC.
14	FF-205	MULLION COVER	6063-T6	ARCADIA INC.
15	VTL-10	GLAZING GASKET	NEOPRENE	ARCADIA INC.
16	TH-SCHR	SETTING CHAIR	6063-T6	ARCADIA INC.
17	TH-480	MULLION	6063-T6	ARCADIA INC.



1 U - SHAPED HEAD CLIP EXT # TH-411
2 HEAD EXT # TH-407



3 MALE MULLION EXT # TH-404
4 HORIZONTAL EXT # TH-476



5 CLIP EXT # 402
6 SILL EXT # TH-481
7 SILL CLIP EXT # TH-410
8 GLAZING BEAD EXT # TH-472
9 HORIZONTAL EXT # TH-477

arcadia
2301 EAST VERNON AVE.
VERNON, CA 90058
PH: (323) 771-9819

TITLE: SERIES IPTC-470 ALUMINUM STOREFRONT (WZ3) (IMPACT) BILL OF MATERIALS AND COMPONENTS

PREPARED BY: BUILDING DROPS, INC.
398 E. DANIA BEACH BLVD., STE. 338
DANIA BEACH, FL 33004
PH: (954) 399-8478
FAX: (954) 744-4738
WEB: www.buildingdrops.com

REMARKS	BY	DATE

THE INSTALLATION DETAILS DESCRIBED HEREIN ARE GENERIC AND MAY NOT REFLECT ACTUAL CONDITIONS FOR A SPECIFIC SITE. IF SITE CONDITIONS CAUSE INSTALLATION TO DEVIATE FROM THE REQUIREMENTS DETAILED HEREIN, A LICENSED ENGINEER OR ARCHITECT SHALL PREPARE SITE SPECIFIC DOCUMENTS FOR USE WITH THIS DOCUMENT.

HERMES F. MORERO
LICENSED PROFESSIONAL ENGINEER
No. 73778
STATE OF FLORIDA
HERMES F. MORERO, P.E.
FLORIDA P.E. No. 73778
BUILDING DROPS, INC.
398 E. DANIA BEACH BLVD. # 338
DANIA BEACH, FL 33004
FBPE CERT. OF AUTHORIZATION No. 29578

FL #: **FL40951**

DATE: **01.28.22**

DWG. BY: **RP/SH** CHK. BY: **HN**

SCALE: **NTS**

DWG. #: **ARC001**

SHEET: **9** OF 10

